

Corporate Information

FUJIFILM Holdings Corporation

7-3, Akasaka 9-chome,
Minato-ku, Tokyo 107-0052, Japan
TEL : 81-3-6271-1111
URL: <http://www.fujifilmholdings.com/>*

Date of Establishment: January 20, 1934

Capital: ¥40,363 million (as of March 31, 2008)

Fiscal Year-end: March 31

Number of employees (Persons): 78,321 (as of March 31, 2008)

Independent Auditor: Ernst & Young ShinNihon

Stock Exchange Listings: Tokyo, Osaka, Nagoya

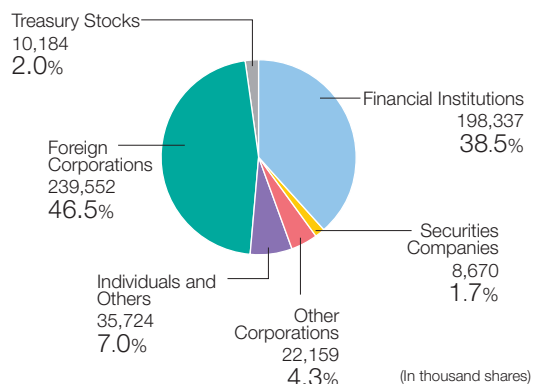
Share Registrar:

The Chuo Mitsui Trust and Banking Company, Limited
33-1, Shiba 3-chome, Minato-ku, Tokyo 105-8574, Japan

Distribution of Shareholders and Shares: (As of March 31, 2008)

Number of Shareholders : 41,326

Number of Shares Outstanding (In thousands) : 514,626

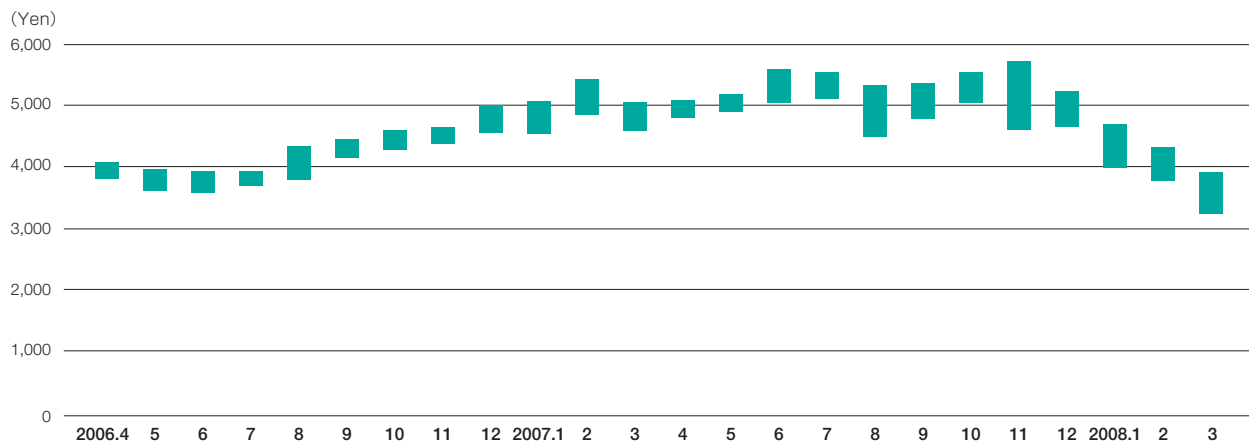


Major Shareholders: (As of March 31, 2008)

Name	Percentage of issued shares (%)
The Master Trust Bank of Japan, Ltd. (trust account)	6.3
Japan Trustee Services Bank, Ltd. (trust account)	5.9
Nippon Life Insurance Company	3.9
State Street Bank & Trust Company	3.8
The Chuo Mitsui Trust and Banking Company, Limited	2.2
JPMorgan Chase Bank 380055	2.1
Sumitomo Mitsui Banking Corporation	2.0
Moxley and Company	2.0
State Street Bank & Trust Company 505103	1.7
Mitsui Sumitomo Insurance Co., Ltd.	1.7

Note: In addition to the major shareholdings described above, FUJIFILM Holdings Corporation holds treasury stock accounting for 2.0% of the total issued shares outstanding.

Common Share Price: (Tokyo Stock Exchange)



* Public notices of the Company shall be made available electronically (in Japanese) via its corporate website (<http://www.fujifilmholdings.com/>). However, in the event that electronic public notices cannot be made due to accident or other unavoidable circumstances, public notices shall be made in the *Nihon Keizai Shimbun*.