

FUJIFILM Holdings Corporation

7-3, Akasaka 9-chome,
Minato-ku, Tokyo 107-0052, Japan
TEL : 81-3-6271-1111
URL: <http://www.fujifilmholdings.com/> *

Date of Establishment: January 20, 1934

Capital: ¥40,363 million (as of March 31, 2009)

Fiscal Year-end: March 31

Number of employees (Persons): 76,252 (as of March 31, 2009)

Independent Auditor: Ernst & Young ShinNihon LLC

Stock Exchange Listings: Tokyo, Osaka, Nagoya

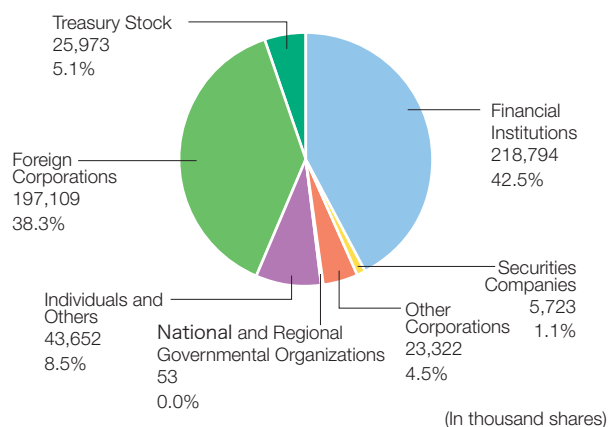
Share Registrar

The Chuo Mitsui Trust and Banking Company, Limited
33-1, Shiba 3-chome, Minato-ku, Tokyo 105-8574, Japan

Distribution of Shareholders and Shares (As of March 31, 2009)

Number of Shareholders: 52,805

Number of Shares Outstanding (In thousands): 514,626

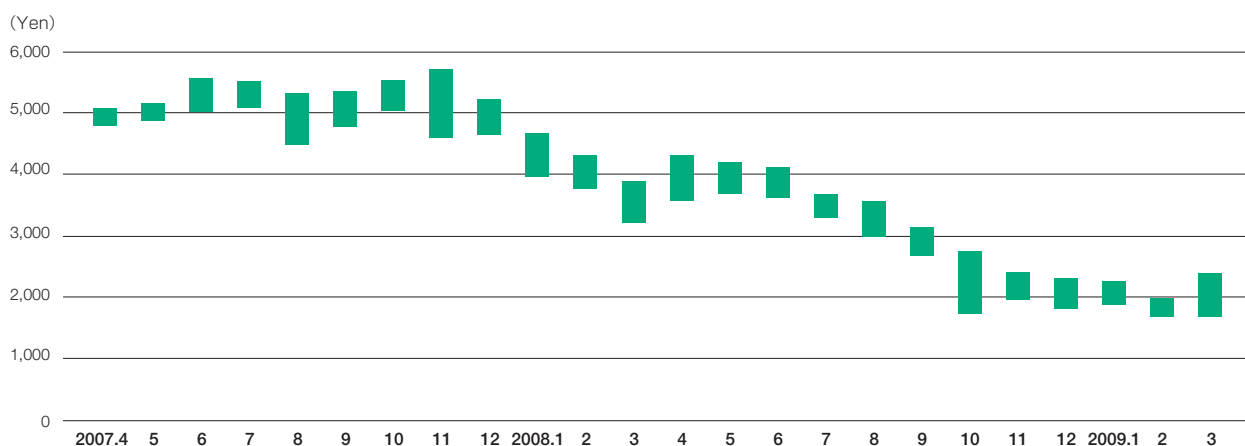


Major Shareholders (As of March 31, 2009)

Name	Percentage of issued shares (%)
Japan Trustee Services Bank, Ltd. (trust account)	7.3
Japan Trustee Services Bank, Ltd. (trust account 4G)	6.4
The Master Trust Bank of Japan, Ltd. (trust account)	6.4
State Street Bank & Trust Company	4.8
Nippon Life Insurance Company	3.9
The Chuo Mitsui Trust and Banking Company, Limited	2.2
Sumitomo Mitsui Banking Corporation	2.0
Moxley and Company	2.0
Mitsui Sumitomo Insurance Co., Ltd.	1.7
National Mutual Insurance Federation of Agricultural Cooperatives	1.3

Note: In addition to the major shareholdings described above, FUJIFILM Holdings Corporation holds treasury stock accounting for 5.1% of the total issued shares outstanding.

Common Share Price (Tokyo Stock Exchange)



* Public notices of the Company shall be made available electronically (in Japanese) via its corporate website (<http://www.fujifilmholdings.com/>). However, in the event that electronic public notices cannot be made due to accident or other unavoidable circumstances, public notices shall be made in the *Nihon Keizai Shimbum*.