

## FUJIFILM Holdings Corporation

7-3, Akasaka 9-chome,  
Minato-ku, Tokyo 107-0052, Japan  
Tel: 81-3-6271-1111  
URL: <http://www.fujifilmholdings.com/>

Date of Establishment: January 20, 1934

Capital: ¥40,363 million (as of March 31, 2010)

Fiscal Year-end: March 31

Number of employees (Persons): 74,216 (as of March 31, 2010)

Independent Auditors: Ernst & Young ShinNihon LLC

Stock Exchange Listings: Tokyo, Osaka, Nagoya

### Share Registrar

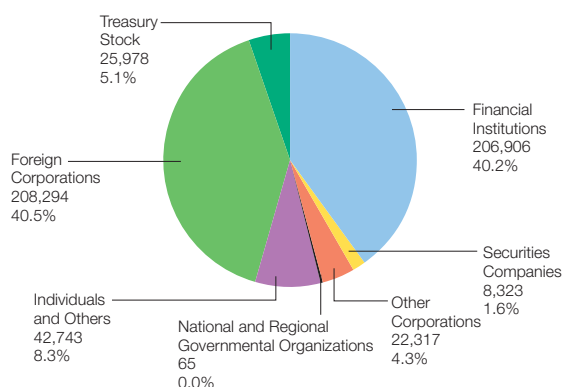
The Chuo Mitsui Trust and Banking Company, Limited  
33-1, Shiba 3-chome, Minato-ku, Tokyo 105-8574, Japan

## Distribution of Shareholders and Shares

(As of March 31, 2010)

Number of Shareholders: 52,054

Number of Shares Outstanding (In thousands): 514,626



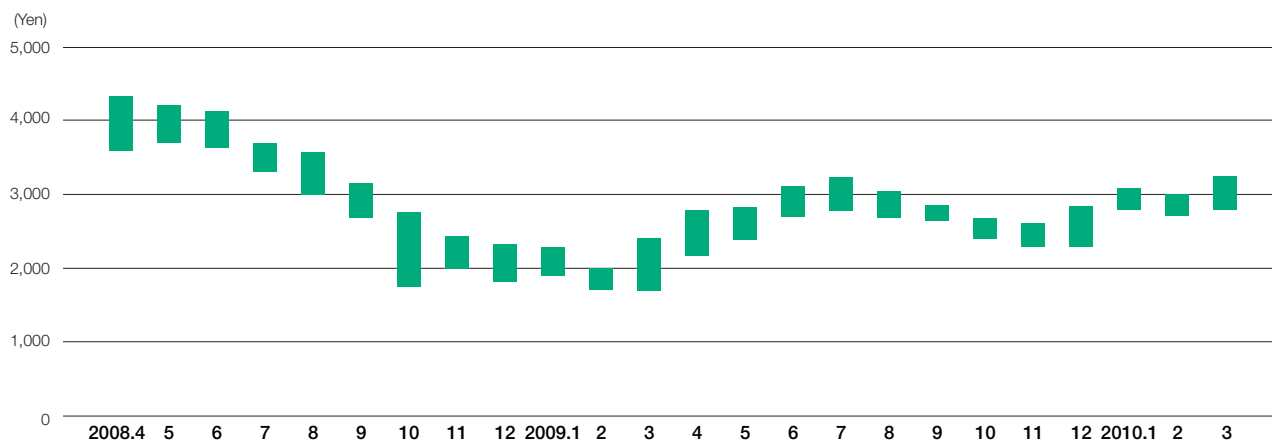
## Major Shareholders

(As of March 31, 2010)

Name	Percentage of issued shares (%)
Japan Trustee Services Bank, Ltd. (trust account)	6.9
The Master Trust Bank of Japan, Ltd. (trust account)	6.5
Nippon Life Insurance Company	3.9
Japan Trustee Services Bank, Ltd. (trust account 9)	2.6
The Chuo Mitsui Trust and Banking Company, Limited	2.2
Sumitomo Mitsui Banking Corporation	2.0
Moxley and Company	2.0
State Street Bank of Trust Company	2.0
State Street Bank of Trust Company 505225	1.7
Mitsui Sumitomo Insurance Co., Ltd.	1.7

Note: In addition to the major shareholders described above, FUJIFILM Holdings Corporation holds treasury stock accounting for 5.1% of the total issued shares outstanding.

## Common Share Price (Tokyo Stock Exchange)



Public notices of the Company shall be made available electronically (in Japanese) via its corporate website (<http://www.fujifilmholdings.com/>). However, in the event that electronic public notices cannot be made due to accident or other unavoidable circumstances, public notices shall be made in the *Nihon Keizai Shinbun*.