

# Fujifilm Group's Activities in Building a Sustainable Society

## The roots of CSR are the trust of stakeholders and consideration for the environment

The Fujifilm Group's business originated with photographic film, a product for which lots of clean water and fresh air are essential to the manufacturing process. It is also a product which requires customers to "buy on trust," since they cannot try it out beforehand. Thus, for the Fujifilm Group, an approach which emphasizes environmental conservation and maintaining the trust of stakeholders has been a major premise at the very foundations of our business activities. This approach is the starting point for our corporate social responsibility (CSR) activities and continues to be passed



FUJIFILM Ashigara site located in an environment blessed with copious clean air and water

down within our Group, as the Fujifilm Group's "DNA."

Fujifilm Group established a current Corporate Philosophy and Vision following the shift to a holding company structure in 2006. Founded on the spirit of contribution to advancement of society, improved health, environment protection and enhancement of the quality of life of people, by providing top-quality products and services with open, fair and clear workplace culture and leading-edge, proprietary technologies, we have established the Fujifilm Group Charter for Corporate Behavior and the Fujifilm Group Code of Conduct and implement them thoroughly throughout the Group.

In the Charter for Corporate Behavior, we uphold five principles, including "Respect for Human Rights," while in the Code of Conduct we define compliance as "more than simply not breaking the law and acting correctly in the light of common sense and ethics," and declare that all Group employees, including senior executives, will conduct themselves in line with these action guidelines.

Moreover we have made the following statement to encourage all Fujifilm Group employees to commit themselves to the fulfillment of corporate social responsibility (CSR) in their daily business operations: The Fujifilm Group's Approach to Corporate Social Responsibility is to contribute to the sustainable development of society by putting our Corporate Philosophy into practice through sincere and fair business activities.

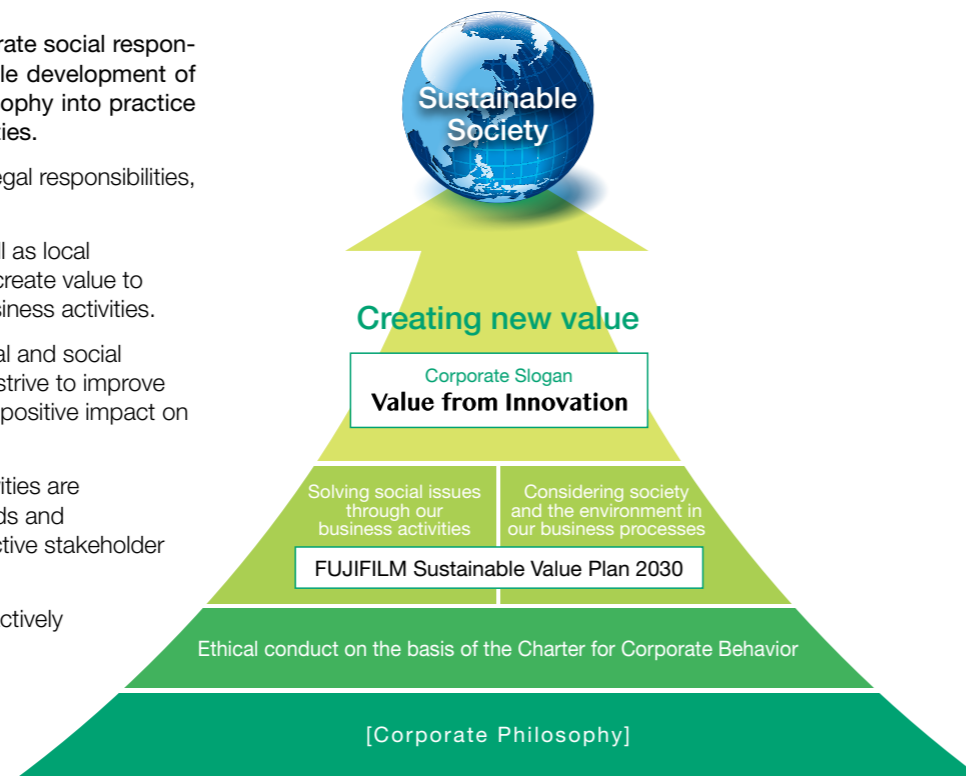
## The Fujifilm Group's Approach to CSR

The Fujifilm Group's approach to corporate social responsibility is to contribute to the sustainable development of society by putting our Corporate Philosophy into practice through sincere and fair business activities.

We will not only fulfill our economic and legal responsibilities, but also:

- endeavor to understand global as well as local environmental and social issues and create value to address these issues through our business activities.
- continue to evaluate the environmental and social impact of our business activities and strive to improve the performance while increasing our positive impact on society.
- constantly reassess whether our activities are responding adequately to the demands and expectations of society through proactive stakeholder engagement with our stakeholders.
- enhance corporate transparency by actively disclosing information.

### The Fujifilm Group's Approach to CSR



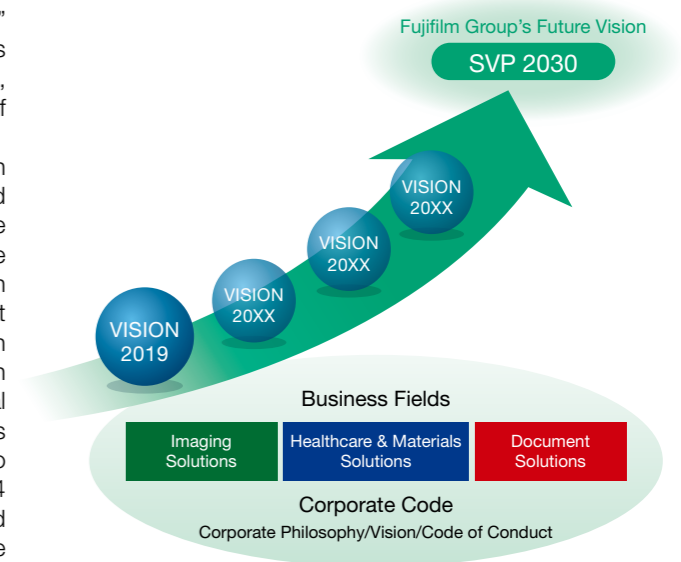
- Fujifilm Group Corporate Philosophy/Vision (full text) <http://www.fujifilmholdings.com/en/about/philosophy/index.html>
- Fujifilm Group Charter for Corporate Behavior (full text) <http://www.fujifilmholdings.com/en/about/philosophy/conduct/index.html>
- Fujifilm Group Code of Conduct (full text) <http://www.fujifilmholdings.com/en/about/philosophy/law/index.html>

## Achieve the long-term goal set for FY2030, to contribute to sustainable society development

To celebrate the 80th anniversary in 2014, the Fujifilm Group founded its new corporate slogan, "Value from Innovation," which seeks to continue creating new technologies, products and services that inspire and excite people everywhere, and empower the potential and expand the horizons of tomorrow's business and lifestyle.

Under this slogan, we revised the Approach to CSR in 2014 to express that we identify the social challenges and more actively seek their solutions. In the same year, we announced our Medium-Term CSR Plan, Sustainable Value Plan 2016 (SVP 2016), aimed at "solving social issues through our business operation" and our Medium-Term Management Plan, Vision 2016, to serve as the plan for concrete action in achieving the goal. We believe that creating new value through our unique and advanced technologies and solving social issues through our business activities present opportunities for our business growth and at the same time allow us to contribute to society. In the three-year period from FY2014 to FY2016, the two Medium-Term Plans were interlinked and produced results for realization of business growth alongside contribution in resolving social issues.

Based on the results and the experiences in the previous medium-term plan, we announced in August 2017 our new CSR Plan, Sustainable Value Plan 2030 (SVP 2030), and the new Medium-Term Management Plan, Vision 2019. SVP 2030 has been introduced as the CSR plan alongside the Sustainable Development Goals (SDGs) set for achievement in 2030 and therefore has set 2030 as its target year. It shows the future vision of the Fujifilm Group as its long-term goal in its contribution to create a sustainable society. Also, to achieve the goals of SVP 2030, Vision 2019 shows the Group's concrete business strategy until FY2019. Rather than focusing only on the growth of our current business operations, the Group plans to invest our management resources into businesses that will drive the Fujifilm Group



further in the future, such as healthcare to respond to the unmet medical needs now becoming a major social issue and highly functional materials that aid in resolving environmental problems, and expect this to lead to the next medium-term plan.

SVP 2030 is a plan that will lay the foundation of business management at Fujifilm Group. In order to achieve the goals, we will strive to become a company with long scope of perspective, capable of contributing to sustainable growth of society by creating "new values" through our business activities.

### Corporate Philosophy

We will use leading-edge, proprietary technologies to provide top-quality products and services that contribute to the advancement of culture, science, technology and industry, as well as improved health and environmental protection in society. Our overarching aim is to help enhance the quality of life of people worldwide.

### Vision

Anchored by an open, fair and clear corporate culture and with leading-edge, proprietary technologies, Fujifilm is determined to remain a leading company by boldly taking up the challenge of developing new products and creating new values.

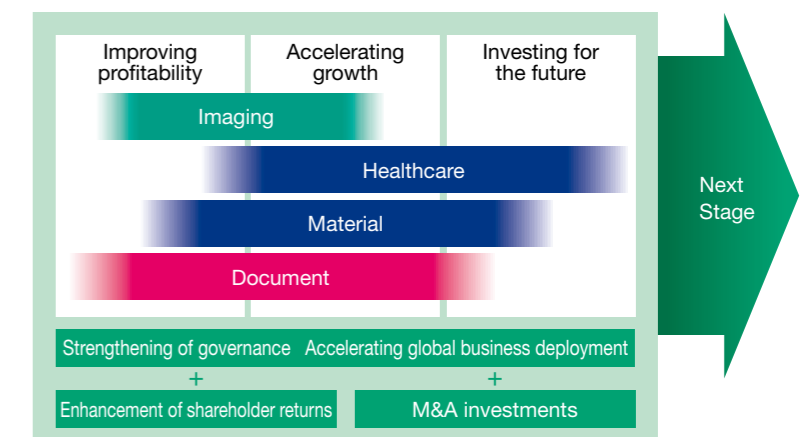
### Code of Conduct

- Respect for Basic Human Rights
- Open, Fair and Clear Corporate Activities
- Protection/Preservation of Corporate Assets and Information
- Environmental Conservation and Protection

### Charter for Corporate Behavior

- A Trusted Company
- Social Responsibility
- Respect for Human Rights
- Global Environmental Conservation
- Vibrant Workplaces

### The Vision 2019, the New Medium-Term Management Plan



VISION 2019, the new Medium-Term Management Plan, lays down three stages of growth, namely "improving profitability," "accelerating growth" and "investing for the future," to adapt to the stage of growth of our business operations in the fields of Imaging, Healthcare, Material and Document solutions. Through action to promote "stable generation of cash-flow through improved profitability of each business operation," "expansion of sales and income through acceleration in growth of the main business operations" and "growth of our future business pillars that become major contributors to our group revenues," we will build an ever more solid portfolio and pursue growth of the entire Group.